



NEW PARTS
ADDED

WIN THE WAR AGAINST DUST



**THE MXM NANO TECH™ AIR FILTER.
ABSOLUTELY OUR BEST AIR FILTER EVER.**

Reduce maintenance costs and increase uptime
with nano technology.

LUBER FINER®
BUILT TO DO MORE™



THE MXM NANO TECH™ AIR FILTER.

ABSOLUTELY OUR BEST AIR FILTER EVER.

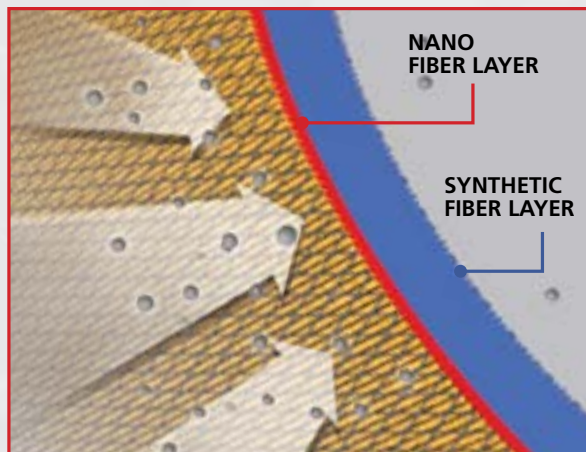
Innovative, high-efficiency filtration that protects a truck's engine from dust and contaminants while increasing uptime.



MXM NANO TECH™ AIR FILTERS OFFER:

- Superior overall efficiency of 99.99%**
- Reduced engine wear and damage
- Compliance with OE warranty specifications

**Tested per ISO 5011 model LAF1849MXM



A TECHNOLOGICALLY ADVANCED "NANO TECH" FIBER LAYER

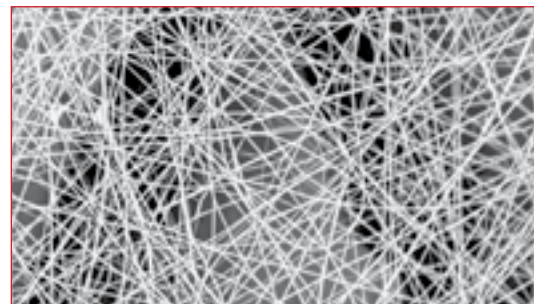
sets MXM NANO TECH™ Air Filters apart from standard cellulose air filters.

This synthetic layer creates a substantially finer filtration mesh, resulting in higher initial and overall efficiencies.



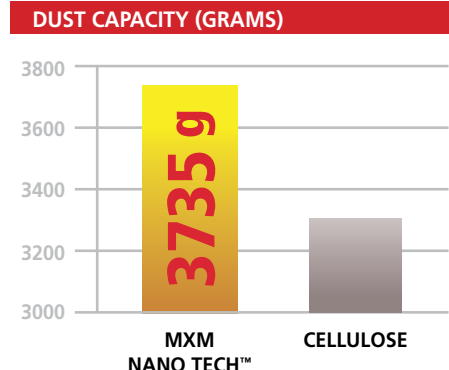
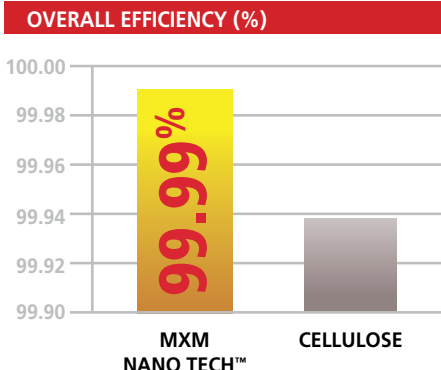
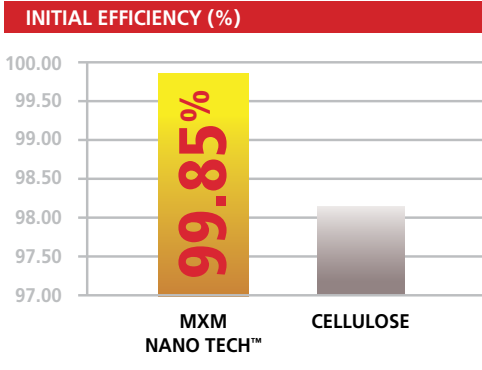
Cellulose Media

Gaps between cellulose fibers are large, allowing contaminants to deeply penetrate the media.



Nano Tech Media

Gaps between nano fibers are small, capturing more contaminants on the surface media layer.



Cross Reference/Primary Application

Luber-finer®	OE #	OE Manufacturer	Baldwin	Fleetguard	Donaldson	Wix
LAF47MXM	4M-8047	Caterpillar	PA1615XP	N/A	DBA5163	42047NP
	Primary Application: Caterpillar Equipment & Deutz Tractors					
LAF1465MXM	AR95758	John Deere	PA2676XP	N/A	DBA5092	N/A
	Primary Application: Allis Chalmers, Cat, Hino, Hitachi, Isuzu, John Deere, Komatsu					
LAF1810MXM	718569	Ag-Chem	PA2518XP	AF1828NF	DBA5043	42493NP
	Primary Application: Ag-Chem, Terex Equipment; Ingersoll-Rand, Joy, Sullair Compressors					
LAF1818MXM	VJ-5175	Wabco	PA2453XP	AF899NF	DBA5040	N/A
	Primary Application: Wabco VJ-0075, VJ-5175; SRG20/29 Donalclone w/10" diameter outlets; Wabco 3200 Dump Truck					
LAF1845MXM	700282	Ag-Chem	PA2573XP	N/A	DBA5136	42235NP
	Primary Application: Ag-Chem, Dynapac, Tamrock, V.M.E., Volvo Equipment; 7/26 P Compressors					
LAF1849MXM	3560734C1	IHC	RS3518XP	N/A	DBA5069	46566NP
	Primary Application: Detroit 60 Series, Ford L Series, Freightliner Century					
LAF1878MXM	RE34962	John Deere	RS2863XP	N/A	DBA5067	46433NP
	Primary Application: Caterpillar, Cummins Engines; Ford, Freightliner, GMC, Hino, IHC, Kenworth					
LAF1953MXM	2005895C1	IHC	RS3530XP	N/A	DBA5104	46745NP
	Primary Application: International Harvester/Navistar 9200, 9300 Trucks					
LAF2536MXM	DBA5106	Donaldson	N/A	N/A	DBA5106	N/A
	Primary Application: Series 50, 60 Detroit Diesel Engines, Radial Seal					
LAF334MXM	4M-9334	Caterpillar	PA1634XP	N/A	N/A	N/A
	Primary Application: Caterpillar 3208 Eng					
LAF3535AMXM	16193874	Atlas Copco	PA1706XP	N/A	DBA5164	42130NP
	Primary Application: Atlas Copco, Hough, International Equipment					
LAF3551MXM	DBA5053	Donaldson	N/A	N/A	DBA5053	46883NP
	Primary Application: Freightliner, Kenworth, Peterbilt, Mack Trucks					
LAF3663MXM	AT175344	John Deere	RS3882XP	N/A	N/A	N/A
	Primary Application: John Deere Backhoes, Excavators & Loaders					
LAF3930MXM	RE51629	John Deere	RS3548XP	N/A	DBA5109	46664NP
	Primary Application: Ford, GMC, Isuzu, Kenworth, Sterling Trucks; John Deere Equipment					
LAF4273MXM	6I0273	Caterpillar	RS3508XP	N/A	DBA5218	46476NP
	Primary Application: Caterpillar 826G, 825G Wheel Dozers					
LAF4498MXM	DBA5105	Donaldson	RS3517XP	N/A	DBA5105	46744NP
	Primary Application: Freightliner, Cummins and Detroit Diesel Series 50					
LAF4501MXM	6I2501	Caterpillar	RS3504XP	N/A	DBA5217	46479NP
	Primary Application: Caterpillar D6H, D7H Crawler Tractors					
LAF4503MXM	6I2503	Caterpillar	RS3506XP	N/A	DBA5220	46607NP
	Primary Application: Caterpillar 650, 660 Wheel Tractorss					
LAF4505MXM	6I2505	Caterpillar	RS3510XP	N/A	DBA5216	46593NP
	Primary Application: Caterpillar D8R, D9G Crawler Tractors					
LAF4509MXM	6I-2509	Caterpillar	RS3514XP	N/A	DBA5232	46742NP
	Primary Application: Caterpillar 5130, 5230 Excavators					



Cross Reference/Primary Application (Continued)

Luber-finer®	OE #	OE Manufacturer	Baldwin	Fleetguard	Donaldson	Wix
LAF4556MXM	X011622	Paccar	RS5287XP	N/A	DBA5295	WA10149NP
	Primary Application: Kenworth and Peterbilt trucks					
LAF4816MXM	DBA5100	Donaldson	RS3539XP	N/A	DBA5100	N/A
	Primary Application: Freightliner, Kenworth, & Peterbilt trucks					
LAF5022MXM	132-7168	Caterpillar	RS3700XP	N/A	DBA5219	N/A
	Primary Application: Caterpillar Equipment					
LAF5069MXM	VA2186	Wabco	PA2363XP	AF879NF	DBA5038	42440NP
	Primary Application: K.W., Dart, Wabco, LeTourneau-Westinghouse Dirt Moving Equipment					
LAF5114MXM	57MD320M	Mack	RS4634XP	N/A	DBA5114	N/A
	Primary Application: Mack 57MD320M; Mack Granite Series Trucks					
LAF5518MXM	70671838	Fiat-Allis	PA2361XP	N/A	N/A	N/A
	Primary Application: Allis Chalmers, Fiat-Allis, New Holland, Samsung Equipment					
LAF6127MXM	27-088627	White	PA2326XP	AF888NF	DBA5057	42691NP
	Primary Application: Peterbilt 320, Autocar & White trucks					
LAF6453MXM	35123512	Ingersoll-Rand	PA2456XP	AF891NF	DBA5049	42546NP
	Primary Application: Ingersoll-Rand, Sullair Compressors					
LAF6587MXM	660360	Allis-Chalmers	PA1884XP	N/A	DBA5034	N/A
	Primary Application: Allis-Chalmers; Fiatagri; Ford; Furukawa; Hitachi; Iveco; Kobelco; Komatsu; Leyland-DAF					
LAF6632MXM	659387	Allis-Chalmers	PA1846XP	N/A	DBA5002	42422NP
	Primary Application: Allis-Chalmers; Kobelco; Komatsu; Leyland-DAF; Mitsubishi					
LAF6769MXM	659533	Allis-Chalmers	PA1885XP	N/A	DBA5046	42208NP
	Primary Application: Allis-Chalmers; John Deere; Mitsubishi; Nissan; John Deere 860 Scraper					
LAF6986MXM	DBA5296	Donaldson	RS5288XP	N/A	DBA5296	N/A
	Primary Application: Kenworth T800 and Peterbilt 388 trucks					
LAF6998MXM	2453818	Caterpillar	RS3998XP	N/A	DBA5207	N/A
	Primary Application: Caterpillar 966H and 972H wheel loaders					
LAF7413MXM	8507413	Gardner Denver	PA2616XP	N/A	N/A	N/A
	Primary Application: Gardner Denver, John Deere Graders					
LAF8149MXM	AT203469	John Deere	RS3734XP	N/A	DBA5228	46761NP
	Primary Application: CAT, DAF, John Deere, Hino, Hitachi, Volvo					
LAF8407MXM	3013212	Cummins	PA2562XP	AF1605NF	DBA5042	N/A
	Primary Application: Cummins; Hitachi Excavators					
LAF8483MXM	1P-8483	Caterpillar	PA2384XP	N/A	DBA5165	42680NP
	Primary Application: Model D-9 Caterpillar Tractor					
LAF8494MXM	220055002	White	N/A	AF1616NF	DBA5016	42941NP
	Primary Application: White, Donaldson, Freightliner, GMC					
LAF8669MXM	220-0453	Caterpillar	RS3744XP	N/A	DBA5221	42803NP
	Primary Application: CAT, DAF, John Deere, Hino, Hitachi, Volvo equipment					
LAF9086MXM	F08505-68	Poclair	PA1886XP	N/A	DBA7041	42225NP
	Primary Application: IHC; Poclair; Euclid, IHC, Gardner-Denver, Poclair, Terex, Versatile 855, 875 Tractors					
LAF9097MXM	3532801C1	International	N/A	N/A	N/A	N/A
	Primary Application: International 7000 Series Trucks					
LAF9155MXM	9035992	Terex	PA1894XP	N/A	DBA5039	42128NP
	Primary Application: Euclid 9035866; Gardner- Denver 5B-469; LeTourneau; Terex; Euclid R30, R35 Series Trucks					



Luber-finer® Hotline: 800-882-0890 • www.luber-finer.com

© 2018, Champion Laboratories, Inc. An ISO14001 and ISO/TS16949 registered company. 200 S. 4th Street Albion, IL 62806-1313

