

## PRODUCT BULLETIN

Subject: LFH8737 Flow Performance VS OE  
Date: 08-06-08  
Bulletin Number: 08-0806 LFH8737 Flow Performance VS OE

---

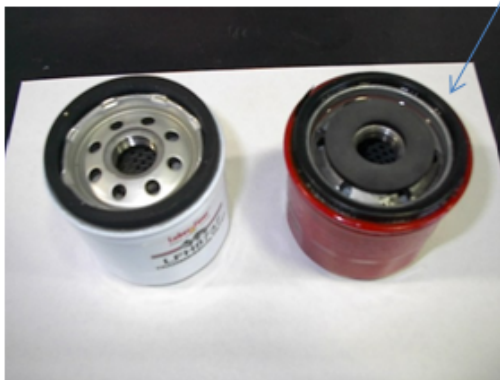
Champion Laboratories, Inc / Luberfiner has received reports stating that part number LFH8737 replacement for Allison transmission filter 29539579 does not meet OE specifications regarding flow requirements.

This is allegedly caused as the result of the OE magnet covering the oil supply holes on the outer perimeter of the filter end plate.

This is not the case. In fact Luberfiner LFH8737 affords less differential pressure than the OE filter.

Please find attached Champion Laboratories, Inc./ Luberfiner laboratories test results and product warranty sheet.

### O E Magnet



# ENGINEERING LABORATORY TEST REPORT

SUBJECT  <b>Flow Restriction: LFH8737 Vs. OEM</b>	TEST REPORT NO. <b>2353</b>	PAGE <b>1 of 1</b>
	REPORTED BY <b>J. Snider</b>	DATE <b>3/3/2006</b>
	APPROVED BY <b>D. Hahn</b>	DATE <b>3/3/2006</b>

**Filters Tested:** Luberfiner LFH8737 and OEM 29539579

**Purpose:** Compare flow restriction of filter when magnet is installed. Perception is that the magnet installed on the stud when filter is installed blocks the inlet holes on the LFH8737.

**Test Procedure:** SAE HS806-2001  
Flow Restriction @ 3, 6, and 9 GPM  
Test fluid: ATF  
Temperature: 100°F

<b>Results:</b>	<b>Flow Rate</b>	<b>Differential Pressure PSID</b>	
		<b><u>OEM</u></b>	<b><u>LFH8737</u></b>
	3 GPM	1.0	0.8
	6 GPM	2.6	2.2
	9 GPM	4.6	4.0

The information contained herein is intended to be used as an indication of performance and is not meant to be used as an exact specification. The information is based upon test data and is subject to test and material variability. Changes may occur based upon technology, process and material innovation as Champion strives to attain the highest levels of performance and customer satisfaction. These changes may occur without notification.

CHAMPION LABORATORIES, INC., 230 E. WALNUT STREET, ALBION, IL 62806

# Luber-finer®

## WARRANTY

Luber-finer filters are guaranteed to be free from defects in material and workmanship.

In the event of an engine or equipment failure directly caused by a proven defective Luber-finer filter, which was properly installed and changed following the engine or equipment manufacturer's recommended service intervals, Luber-finer will restore the engine or equipment to a condition equivalent to that existing just before the failure.

Claims for engine or equipment repairs provided under this warranty must be submitted within 30 days after discovery of damage. Luber-finer Technical Services Department reserves the right to examine the engine or equipment and filter to determine the amount of damage and whether it was caused by a defective Luber-finer filter.

This warranty gives you specific legal rights. You may have other rights which vary from state to state.

Engine and equipment manufacturer's warranties remain in effect when Luber-finer filters are used.

GENUINE **Luber-finer**® WORLD FAMOUS FILTERS

LUBER-FINER IS A REGISTERED TRADEMARK OF CHAMPION LABORATORIES, INC.